

AXE027 PICAXE USB CABLE

Index:

- 1.0) Introduction
- 2.0) General tips for using the AXE027 USB cable
- 3.0) Windows 2000/2003/XP/Vista Installation
- 3.1) Windows 7 (32/64 bit) Installation
- 4.0) Linux Installation
- 5.0) Mac OS X Installation
- 6.0) Windows CE/PocketPC/Mobile Installation
- 7.0) PICAXE Download Circuit
- 8.0) AXE027 Circuit Diagram



1.0) Introduction

The PICAXE USB download cable is used to download PICAXE programs into PICAXE chips. It can be used with any PICAXE chip or project board. The cable is compatible with any software application that supports programming of PICAXE chips.

The PICAXE USB download cable connects via the computer's USB port. However the cable contains a tiny circuit board, moulded into the compact USB connector. This circuit contains a USB to serial convertor chip, and so the actual data transfer to the PICAXE chip is via a 5V logic level serial connection.



2.0) General tips for using the AXE027 USB cable

Always plug in the USB cable *before* starting the software application.

Always use the USB cable in the *same* USB port on your computer.

Most operating system regards each individual USB port as a unique location. Therefore if you plug your cable into a different USB port on the computer you may be prompted to reinstall the driver files for this new location.

The USB cable's internal circuit board is powered by the computer's USB port. Therefore remove the cable from the PICAXE project when the USB end of the cable is not inserted into a computer, as the cable will not then be powered.

3.0) Windows 2000/XP/Vista Installation (see section 3.1 for Windows 7)

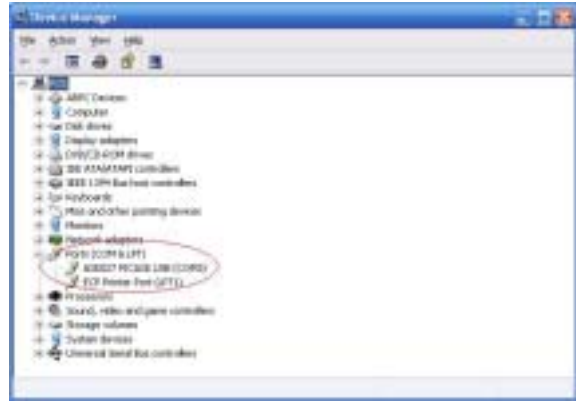
When the AXE027 software driver is installed, the Windows operating system automatically allocates the USB cable a 'virtual COM port number' to be used (e.g. COM5) within the PICAXE software. This virtual COM port number will vary between computers, but can also be changed to a different number if desired.

After you have installed the drivers, if you are not sure which COM port number has been allocated, you can use Windows 'Device Manager' to study the configuration. To use Device Manager click:

Start > Control Panel > Performance & Maintenance > System > Hardware > Device Manager

or in classic view

Start > Settings > Control Panel > System > Hardware > Device Manager



The Device Manager will then start - click the '+' symbol beside 'Ports (COM & LPT)' so that all the entries are visible. Beside the 'AXE027 PICAXE USB' entry will be the currently allocated COM port number. The instructions given later in this manual explains how to change this COM port number if necessary.

3.01) Installing the AXE027 PICAXE USB Cable Driver

The first time you connect the AXE027 PICAXE USB cable you will be automatically prompted to install the software driver files. These driver files can be found on the Programming Editor CDROM (in the USB_drivers_AXE027 folder) or downloaded free of charge from the software downloads section at www.picaxe.com

There are two download options:

- 1) Self extracting pre-installer - this is the easiest option - just download and run the file before connecting the cable. It pre-installs the drivers onto your Windows system.
- 2) Manual zip file - download and unzip the downloaded files into a temporary folder (e.g. c:\temp) before proceeding. On computers setup with user accounts (e.g. school networks) please ensure you are logged in as an 'administrator' before proceeding.

Step 1

Plug the AXE027 USB cable into an available USB port on your computer. Remember which port you have used as it is important to always use the same port in the future.

After a few seconds Windows will recognise that the cable has been inserted and will automatically prompt you with the 'Found New Hardware' wizard.

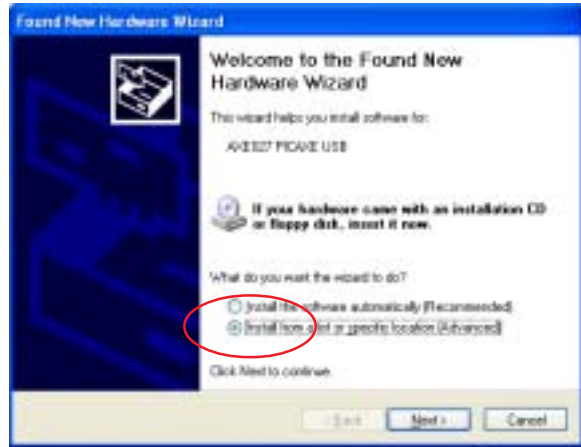
Do NOT connect to Windows Update - as you have already downloaded the correct driver files. Therefore select 'No' then click 'Next'.



Step 2

If you have used the pre-installer then simply select: 'Install the software automatically' click 'Next', then move to Step 4 below.

If you have not used the preinstaller then select: 'Install from a list or specified location (Advanced)' click 'Next'

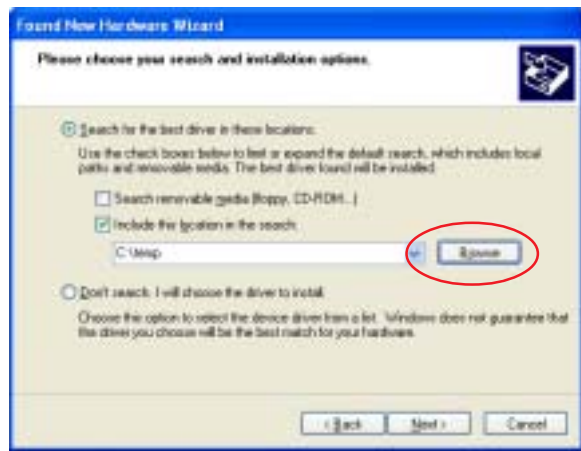


Step 3

Select 'Search for the best driver in these locations'.

Remove the tick from the 'Search' box and add a tick beside the 'Include' box. Click the 'Browse' button and then browse to the driver folder. This is either the appropriate folder within the 'USB_drivers_AXE027' folder on the Programming Editor CDROM or the temporary folder on your hard-drive where the website downloaded driver files have been saved (e.g. c:\temp).

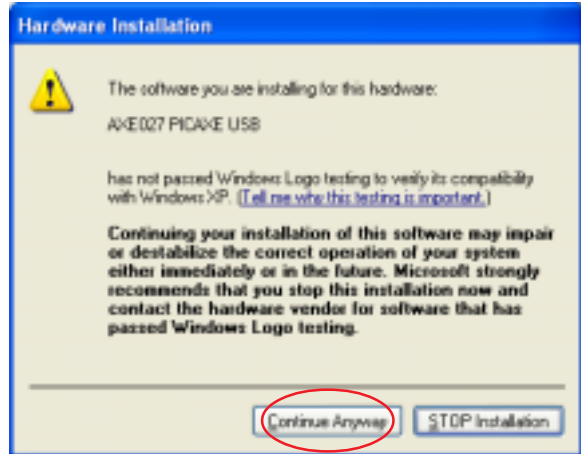
Click 'Next'



Step 4

If a Windows logo testing warning is displayed click 'Continue Anyway'

Note that the generic FTDI software drivers to be installed during this process have already passed Windows logo testing. However due to legal reasons when distributed by a third party (e.g. Revolution) they cannot currently be marked as passed.

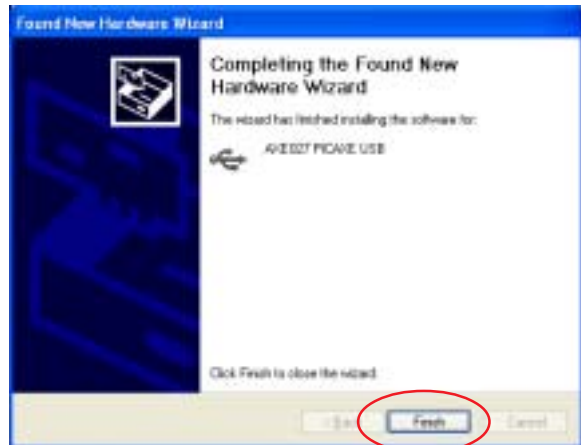


Step 5

Click 'Finish' when the installation completes.

Step 6

Please note the entire process (steps 2 to 5) will now repeat. This is completely normal as the Windows operating system requires two separate driver files for the AXE027 cable to operate. The Windows operating system will now automatically allocate the AXE027 USB cable a default 'COM port number' to use within the Programming Editor software. However this automatically allocated COM port number may not be suitable (e.g. COM20) and may need to be re-assigning to another port (e.g. COM4).

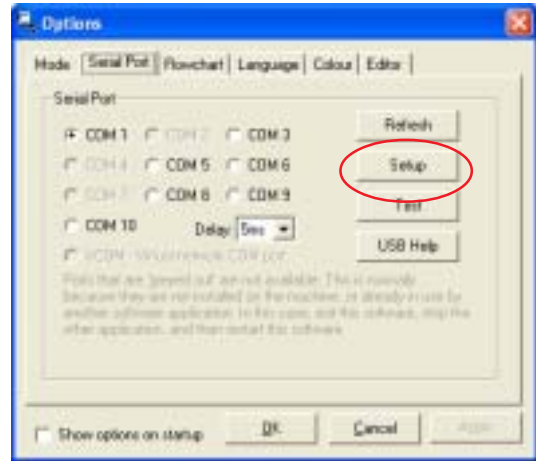


3.02) Changing the default 'COM Port Number'

After initial driver installation, the Windows operating system will automatically allocate the AXE027 USB cable a default 'COM port number' to use within the Programming Editor software. However this automatically allocated port number may not be suitable (e.g. COM20) and may need re-assigning to another COM port number (e.g. COM4).

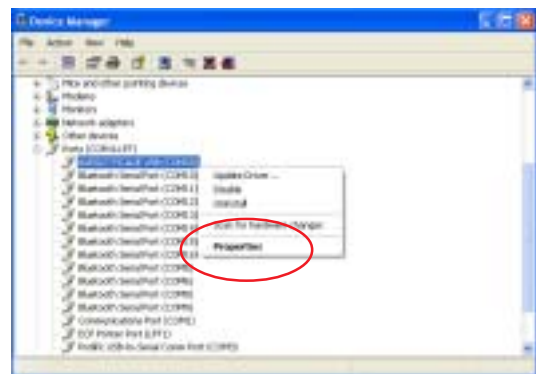
Step 1

Start the Programming Editor software.
Select the View>Options menu and click on the 'Serial Port' tab. Note which ports are greyed out (not used).
Select one of these greyed out port numbers (e.g. in this example COM4)
Click the 'Setup' button to launch Device Manager.



Step 2

Click on the '+' beside 'Ports (COM and LPT)' to browse the current ports. Select the 'AXE027 PICAXE USB' entry and right click the mouse. Select 'Properties'.



Step 3

Select the 'Port Settings' tab and then click the 'Advanced...' button



Step 4

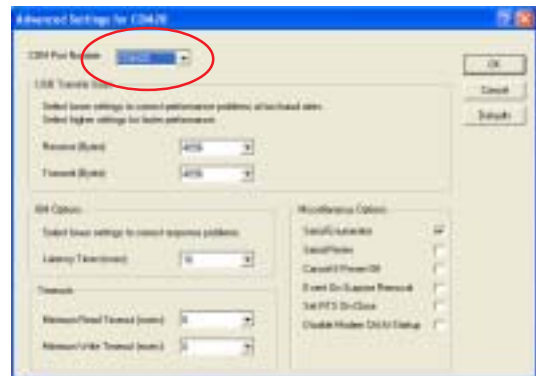
The COM Port number currently allocated is shown on screen (COM20 in this example).

From the COM port number list select the desired new COM port number and then click 'OK' twice to save the new port number (none of the other settings need to be changed).

Note that sometimes the Windows operating system marks ports as 'in use', even though they are not actually in use at that time. This is because Windows is 'reserving' the COM port number for a particular device. This can occur, for instance, if you plug your AXE027 cable into a different USB port on the computer - Windows is expecting the cable to be inserted into the original USB port and so is reserving the COM number for that USB port. You may change to COM ports marked as 'in use' but will have to OK the extra Windows warning message.

Step 5

In the Programming Editor now click the 'Refresh' button. The desired COM port should now become available. Select this port and then click 'OK'. The system is now ready for use.



This process is only required once as Windows automatically saves the COM port settings for this cable for future use (when used in this USB port location).

3.1) Windows 7 (32 & 64 bit) Installation

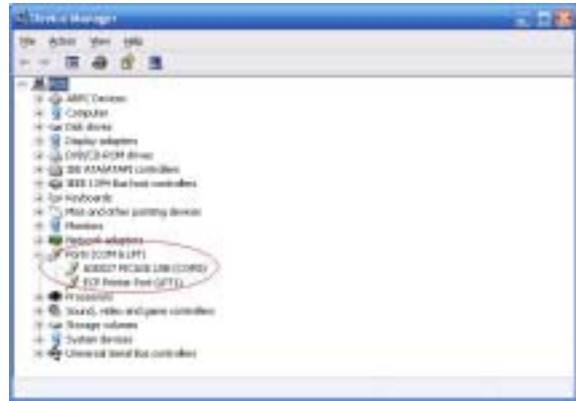
When the AXE027 software driver is installed, the Windows operating system automatically allocates the USB cable a 'virtual COM port number' to be used (e.g. COM3) within the PICAXE software. This virtual COM port number will vary between computers, but can also be changed to a different number if desired.

After you have correctly installed the drivers, if you are not sure which COM port number has been allocated, you can use Windows 'Device Manager' to study the configuration. To view Device Manager click:

Start > Control Panel > Hardware and Sound

then click

'Device Manager' which is under 'Devices and Printers' section



The Device Manager will then start - click the '+' symbol beside 'Ports (COM & LPT)' so that all the entries are visible. Beside the 'AXE027 PICAXE USB' entry will be the currently allocated COM port number.

3.11) Installing the AXE027 PICAXE USB Cable Driver

Due to the new way Windows 7 handles driver installation the installation process is slightly different to XP / Vista. The screenshots below were taken from "Windows 7 Home Premium (64-bit)" - other versions may vary slightly.

Step 1 - Download the driver files

There are two download options:

- 1) Self extracting pre-installer - this is the easiest option - just download and run the file before connecting the cable. It pre-installs the drivers onto your Windows system.
- 2) Manual zip file - download and unzip the downloaded files into a temporary folder (e.g. shown as axe027_win7 in these screenshots)

Step 2 - Let Windows 7 attempt to background detect and install a signed driver

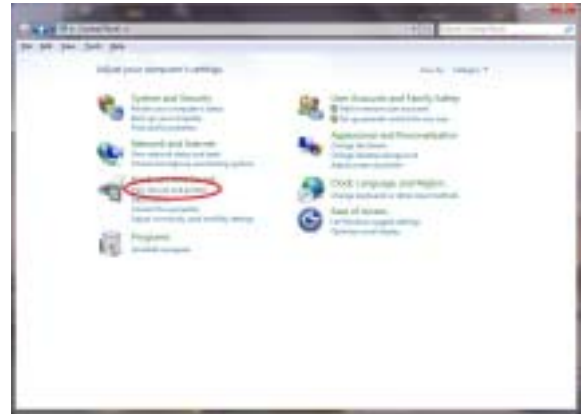
Connect the AXE027 cable to the desired USB port. Remember you must always use the same USB port. Leave for 5 minutes - have a coffee! During this time Windows 7 will attempt to background load a driver automatically and task bar messages such as those shown will appear. This automated process will eventually fail, do not worry - this is normal and expected as we wish to manually install the driver instead.



Step 3 - Manually Install AXE027 Driver

Click Start > Control Panel

Click 'View Devices and Printers' in the 'Hardware and Sound' section



Right Click over 'AXE027 PICAXE USB' and select Properties



Click Hardware Tab

Highlight (click on) 'AXE027 PICAXE USB' in the list

Click Properties button



Click 'Change Settings' button



Click 'Update Driver'



If you have used the pre-installer then simply select: 'Search automatically'



If you have not used the preinstaller then select: 'Browse my Computer for driver software'

Click Browse button and select the downloaded drivers folder. Click Next.



Select 'Install this driver software anyway' on the Security warning (if it appears).



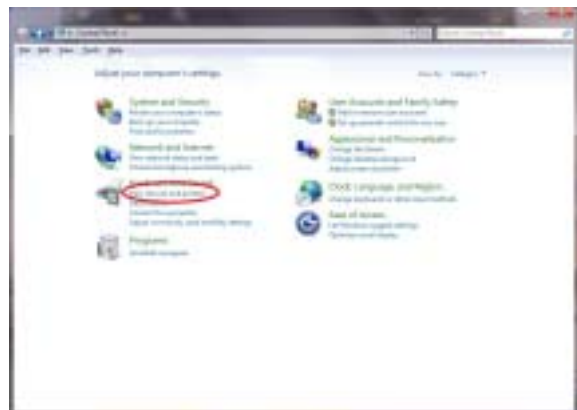
When installation completes close all open windows

This process MUST now be repeated to setup the Virtual USB serial port driver, which is a separate driver.

Step 4 - Manually Install Virtual USB Port Driver

Click Start > Control Panel

Click 'View Devices and Printers' in the 'Hardware and Sound' section



Right Click over 'AXE027 PICAXE USB' and select Properties



Click Hardware Tab
 Highlight (click on) 'USB Serial Port' in the list (instead of 'AXE027 PICAXE USB' which was used last time)
 Click Properties button



Click 'Change Settings' button

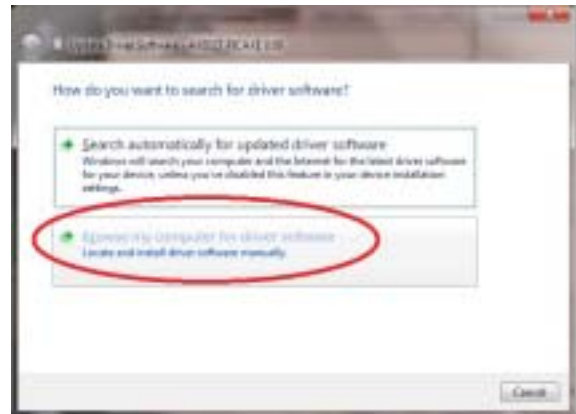


Click 'Update Driver'



If you have used the pre-installer then simply select:
'Search automatically'

If you have not used the preinstaller then select:
'Browse my Computer for driver software'



Click Browse button and select the downloaded drivers folder. Click Next.



Select 'Install this driver anyway' on any security warning.



When installation completes note the new COM port number in the title bar of the 'successful update' message.

This is the COM port number to be used in the PICAXE software (e.g. COM3 shown in this screenshot).

When installation completes close all open windows



4.0) Linux Installation

The AXE027 cable contains an internal electronic circuit, based upon an FTDI USB<->serial converter chip. This chip is already supported by the default Linux installation, via the kernel driver named 'ftdi_sio' (kernel 2.4.20 and later). Therefore no driver download is required.



However, as many different products from many different companies all use the same FTDI chip, each product is given a unique 'product id' number for identification purposes. This unique product id is programmed into the chip inside the cable, so that when the cable is connected to the computer it can be uniquely identified.

The unique product id for the AXE027 USB cable is 0xbd90. The vendor id is 0x0403.

However the default driver ftdi_sio, as installed by most Linux distributions, only recognises a couple of (default) product ids for the FTDI chip (e.g. 0x6001). Therefore it is required to 'patch' the driver so that it correctly supports the AXE027's 0xbd90 product id.

There are 3 different ways to do this, depending on user expertise with using the Linux operating system.

Option 1 is to simply patch ("modprobe") the driver details every time the cable is used. This is very simple, but needs to be carried out every time the computer is restarted (before the AXE027 cable is inserted). This method also works when running Linux from a Live CD (without installation).

Option 2 (recommended) is also fairly straight forward, and permanent as it involves adding a new 'udev rule' file to the operating system. The rule runs automatically each time the computer boots.

Option 3 is advanced and only for those familiar with kernel module recompiling. It involves modifying the original driver source code and recompiling.

All 3 options are checked for correct operation in the same simple way – after inserting the AXE027 cable into the USB port the symbolic link file called

```
/dev/ttyUSB0
```

should automatically appear within the operating system.

Note that any application using the AXE027 cable needs to address this USB symbolic link

```
/dev/ttyUSB0
```

which is not the same as the traditional serial (e.g. "COM1") port link

```
/dev/ttyS0
```

Remember the Linux operating system is case sensitive - 'ttyusb0' is not the same as 'ttyUSB0'. If you have more than one similar USB device attached the name of the second device will be ttyUSB1 etc.

The following instructions were tested on an Asus eeePc 900, running the default Xandros (Debian derived) distribution and on a PC booted with a Ubuntu live CD (not installed).

Note that although the principles are the same for most Linux distributions, different distributions will use different methods for becoming root (aka "superuser") (e.g. use su -l rather than sudo) or for opening a Console Terminal. See the online documentation for your distribution for more specific details.

4.1) Linux Patch Option 1

Temporarily update the kernel drivers product id every time the computer is restarted (this must be carried out before the cable is inserted into the USB port). This method can also be used when running Linux from a live CD.

To do this open a Terminal console and then type

```
sudo modprobe ftdi_sio vendor=0x0403 product=0xbd90
```

4.2) Linux Patch Option 2 (recommended)

Create a new udev rule, so that the modprobe rule is automatically applied every time the computer boots.

Create a new file (e.g. using KWrite, gedit or similar text editor) named

```
/etc/udev/rules.d/99-axe027.rules
```

To do this press open a Terminal console and then type

```
sudo kwrite /etc/udev/rules.d/99-axe027.rules
```

Then enter the following text (*note the last 2 lines below should be entered as one long line*) and then save the file.

```
# /etc/udev/rules.d/99-axe027.rules
# contains axe027 udev rule to patch default
# FTDI product id to AXE027 product id (0xbd90)

SYSFS{idProduct}=="bd90", SYSFS{idVendor}=="0403",
    RUN+="/sbin/modprobe -q ftdi_sio product=0xbd90 vendor=0x0403"
```

The new rule will then always be applied when the system boots. To immediately try out the new rule without rebooting open a Terminal console and then type

```
sudo udevcontrol reload_rules
```

4.3) Patch Option 3

The technically correct method, but for experienced users only!

Patch the original kernel source files `orig/drivers/usb/serial/ftdi_sio.c` (3 extra lines required as overleaf) and `orig/drivers/usb/serial/ftdi_sio.h` (1 extra line required) and recompile.

After patching these two files also make sure in addition to normal USB support you have `CONFIG_USB_SERIAL_GENERIC` and `CONFIG_USB_SERIAL_FTDI_SIO` enabled in kernel `.config`. Then recompile and install the kernel (or at least this module).

```

*** orig/drivers/usb/serial/ftdi_sio.c
*** linux/drivers/usb/serial/ftdi_sio.c
*****
*** 350,355 ***
*** 350,356 ***
    { USB_DEVICE_VER(FTDI_VID, PROTEGO_SPECIAL_3, 0, 0x3ff) },
    { USB_DEVICE_VER(FTDI_VID, PROTEGO_SPECIAL_4, 0, 0x3ff) },
    { USB_DEVICE_VER(FTDI_VID, FTDI_ELV_UO100_PID, 0, 0x3ff) },
+   { USB_DEVICE_VER(FTDI_VID, FTDI_AXE027_PID, 0, 0x3ff) },
    { } /* Terminating entry */
};

*****
*** 431,436 ***
*** 433,438 ***
    { USB_DEVICE_VER(FTDI_VID, PROTEGO_SPECIAL_3, 0x400, 0xffff) },
    { USB_DEVICE_VER(FTDI_VID, PROTEGO_SPECIAL_4, 0x400, 0xffff) },
    { USB_DEVICE_VER(FTDI_VID, FTDI_ELV_UO100_PID, 0x400, 0xffff) },
+   { USB_DEVICE_VER(FTDI_VID, FTDI_AXE027_PID, 0x400, 0xffff) },
    { USB_DEVICE(FTDI_VID, FTDI_CCSICDU20_0_PID) },
    { USB_DEVICE(FTDI_VID, FTDI_CCSICDU40_1_PID) },
    { } /* Terminating entry */

*****
*** 537,542 ***
*** 541,545 ***

    { USB_DEVICE(FTDI_VID, PROTEGO_SPECIAL_3) },
    { USB_DEVICE(FTDI_VID, PROTEGO_SPECIAL_4) },
    { USB_DEVICE(FTDI_VID, FTDI_ELV_UO100_PID) },
+   { USB_DEVICE(FTDI_VID, FTDI_AXE027_PID) },
    { USB_DEVICE(FTDI_VID, FTDI_CCSICDU20_0_PID) },
    { USB_DEVICE(FTDI_VID, FTDI_CCSICDU40_1_PID) },
    { } /* Terminating entry */

*** orig/drivers/usb/serial/ftdi_sio.h
*** linux/drivers/usb/serial/ftdi_sio.h
*****
*** 143,148 ***
*** 143,149 ***

    /* ELV USB Module UO100 (PID sent by Stefan Frings) */
    #define FTDI_ELV_UO100_PID    0xFB58 /* Product Id */
+ #define FTDI_AXE027_PID    0xBD90 /* Product Id */

```

5.0) Mac (OS X) Installation

Install the Mac OS X software driver BEFORE inserting the AXE027 cable into the USB port. Note that the screenshots shown may vary with different version of Mac OS.

First download the AXE027 Mac driver from the software section of the www.picaxe.com website and save it to the hard disk. Double click on the file to unzip it. The driver is now available in disk image (.dmg) format.

Run the installer by double clicking on the 'FTDIUSBSerialDriver.dmg' icon.

Click Continue to proceed with the installation and follow the instructions on screen.



When the installation is complete, reboot the computer.



When the computer has rebooted, plug in the AXE027 cable.

If the device is installed properly, you will now see the cable as a symbolic link file entry in the /dev directory:

```
/dev/tty.usbserial-xxxxxxx
```

where xxxx is a unique serial number. Remember this number as you will require it to use the AXE027 cable.

To study the contents of /dev use the Terminal application. The Terminal application can be launched by selecting Go > Applications > Utilities > Terminal. Type the following lines in the Terminal window to produce the file list:

```
cd /dev
ls -l
```

5.1) Trouble shooting:

If the AXE027 cable cannot be accessed an ownership or permissions problem may be preventing the system from making the cable accessible.

Check that the driver is owned by root and wheel. The most common symptom is the group for FTDIUSBSerialDriver is not wheel. To change the group, login as root and perform the following script in a Terminal window (Go > Applications > Utilities > Terminal):

```
cd /system/library/extensions  
chgrp -R wheel FTDIUSBSerialDriver.kext
```

Reboot for the change to take effect.

6.0) Windows CE (v4.2 up, including PocketPC 2003, Mobile 5, Mobile 6) Installation

Please note that not all PDAs/Smartphones can act as a 'USB host'. Acting as a USB host is NOT the same technology as using a USB cable for 'synching' - whilst synching the computer is the USB host, and the PDA is a USB client. If you can connect a 'USB memory stick' directly to your PDA to transfer files then the PDA can act as a host, if you cannot do this your PDA does not support USB host mode and the AXE027 cable will not operate with your PDA.

Most PDAs that support the USB host function will require some kind of host adapter (e.g. USB host cable, presentation pack or Compact Flash card) before they will operate as the USB host. In this case the adapter must be correctly installed before the AXE027 cable is inserted.

Windows CE 4.2 (and later) is supported. Please note different versions of Windows CE (e.g. 4.2 to 5.2 or 6.0) and each different type of PDA processor (e.g. x86 or ARM/XScale) require a different driver. Therefore please ensure you are downloading/installing the correct driver for your system (details at Start > Settings > System > System Info)

6.1) Installation

Step 1

Download the latest available drivers for the required PDA processor model from the software pages at www.picaxe.co.uk and unzip them.

The two files in the driver package are:

ftdi_ser.dll
FTDIPORT.inf

Step 2

If the PDA requires a host adaptor (e.g. USB host cable, presentation pack or Compact Flash host card), make sure that it is connected and installed before proceeding.

Step 3

Copy the two files to a USB memory stick and then copy them to the \\Windows directory on the PDA (use File Manager > Edit > Copy/Paste to copy the files). Alternately use ActiveSync from a PC to carry out this copying.

Step 4

Connect the AXE027 cable to the host USB port on the PDA.

An 'Unidentified USB Device' window will appear.

Type the full name of the driver file

ftdi_ser.dll

into the dialog box and click OK.

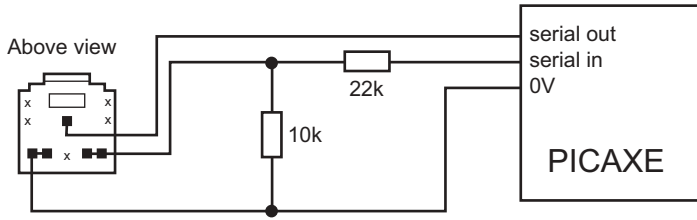


If the file name is incorrectly spelt, the driver will not be found and the AXE027 cable will not function.

If the driver is correctly installed the AXE027 cable ID (04 03 BD 90) should now be visible when clicking Start > Settings > System > System Info > USB Host Connections (ignore all fields except Manufacture, which will state 04 03 BD 90 if cable is correctly recognised).

The AXE027 will be given the next available free COM port number (e.g. COM0 or COM2). Valid COM port numbers on Windows CE are COM0 to COM9 only. Note that other devices (e.g. GPS / bluetooth etc.) may also make use of COM ports. Unfortunately it is not possible to view which COM port is allocated to the AXE027 via 'System Info', so some experimentation trying COM0 through to COM9 in turn may be required!

7.0) PICAXE Download Circuit



The standard PICAXE download socket (part CON039) and 10k/22k download circuit is unchanged for use with the AXE027 USB cable (ie the same circuit is used for both the AXE026 serial cable and the AXE027 USB cable).

As the AXE027 interfacing voltage is at true logic levels (5V, rather than RS232 voltage levels) it is theoretically permissible to reduce the value of the 22k resistor (e.g. to 1k), but only if a AXE026 serial cable is **never** to be used. However for maximum versatility it is recommended to leave the circuit unchanged.

There is no advantage to using the 'enhanced' download circuit (see main PICAXE manual) with the AXE027 USB cable, as the enhancements in this circuit are to compensate for negative variations in RS232 voltages (which do not apply when using the 5V logic level AXE027 USB cable). However, if already built into a project board, it is acceptable to continue to use the enhanced circuit.

The AXE027 USB cable may also be used to transmit/receive serial data from the PICAXE input/output pins (via serin and serout commands).

6) AXE027 Circuit Diagram

The miniature USB to serial circuit is built into the plastic moulding of the USB plug on the AXE027 cable. The circuit diagram is shown below.

